

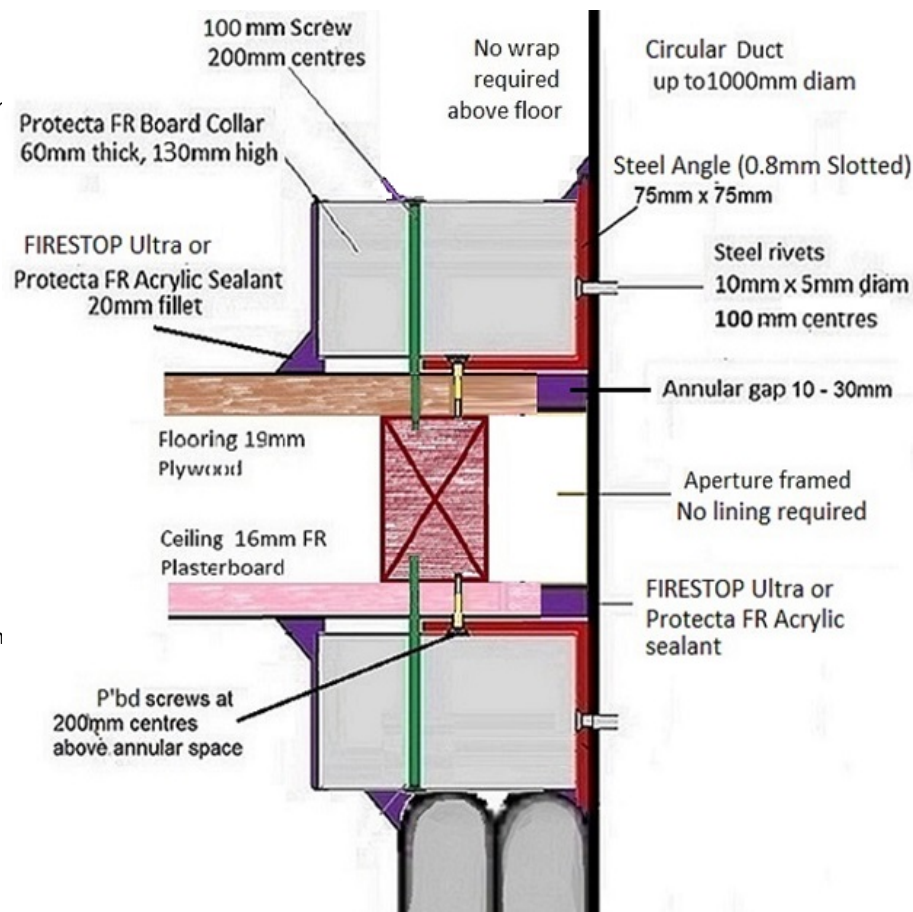


FIRESTOP CENTRE

Authorised New Zealand Distributor
Ph (09) 483 4000 www.firestopcentre.co.nz

INSTALLATION INSTRUCTIONS

1. Aperture to be framed but not lined. Plasterboard and plywood to be cut to shape to form annular gap 10 - 30mm.
2. Sealants permitted for this system are Protecta FR Acrylic or FIRESTOP Ultra. Either may be used.
3. Seal top and bottom of the floor with sealant. Then apply a bead of sealant to the duct and the floor/ceiling prior to attaching the angle.
4. Attach 0.8mm thick slotted steel angle 75mm x 75mm top and bottom. Fix to the duct with steel rivets 10mm x 5mm diam at 100mm centres.
Fix to the floor and ceiling with plasterboard screws (min 32mm) at max 200mm centres with at least three fixings into framing each side. Where angle does not overlap the framing fix directly to the plasterboard or plywood.
5. Apply a bead of sealant to each face of the angle. Construct a collar from Protecta FR Board (60mm 2-sided) shaped to match the duct and overlapping the separating element by at least 100mm. Fix directly to the floor and ceiling with 8-10g x 75mm screws with penny washers at 200mm centres. Ensure a fixing at max 50mm from the edge of each board section.
6. Fill any joints in the collar with sealant. Then apply a 20mm fillet at the floor/collar joint, ceiling collar joint and the duct/collar/angle joint. Finally cover any exposed cut edges of the collar with sealant or Protecta FR Coating.
7. Install the Firestop Duct Wrap layers on the bottom side only as specified and a sealant fillet at the wrap/collar junction.



FIRESTOP Duct Wrap-38 Circular Duct (up to 1000mm diam) 60 minute Floor / Ceiling System External Fire

FireTS Lab

Report AR23108, Pages 8, 15-18, 27, 29
AS1530.4-2014 AS4072.1-2005

System ID# FC410

Products	FIRESTOP Duct Wrap-38 Protecta FR Board Protecta FR Acrylic or FIRESTOP Ultra
Application	Fire stopping of circular duct penetrating a floor/ceiling system
Construction	Floor/Ceiling system comprised of minimum 16mm fire rated plasterboard ceiling, minimum 90mm timber joists and 19mm plywood floor above

Fire Classification

NOTE: For general instructions on installing FIRESTOP Duct Wrap-38 see [Installation Instructions](#) sheet on Firestop Centre website.

External Fire Only

FRR 60/60/30
Below floor single layer wrap

FRR 60/60/60
Below floor double layer wrap

NOTE: Where floor/ceiling FRR is less than above reduce penetration rating to match the floor.

As a part of our policy of on-going product development and testing, we reserve the right to modify, alter or change product specifications without giving notice. All information contained in this document is given in good faith and is provided for guidance only. Any drawings provided are for illustrative purposes only. As Firestop Centre has no control over the methods or competence of installation and of prevailing site conditions, no warranties, expressed or implied are intended to be given as to the actual performance of the product mentioned or referred to herein and no liability whatsoever will be accepted for any loss, damage or injury arising from the use of the information given.



FIRESTOP

Firestop Centre Ltd
657 Great South Road
Penrose, AUCKLAND